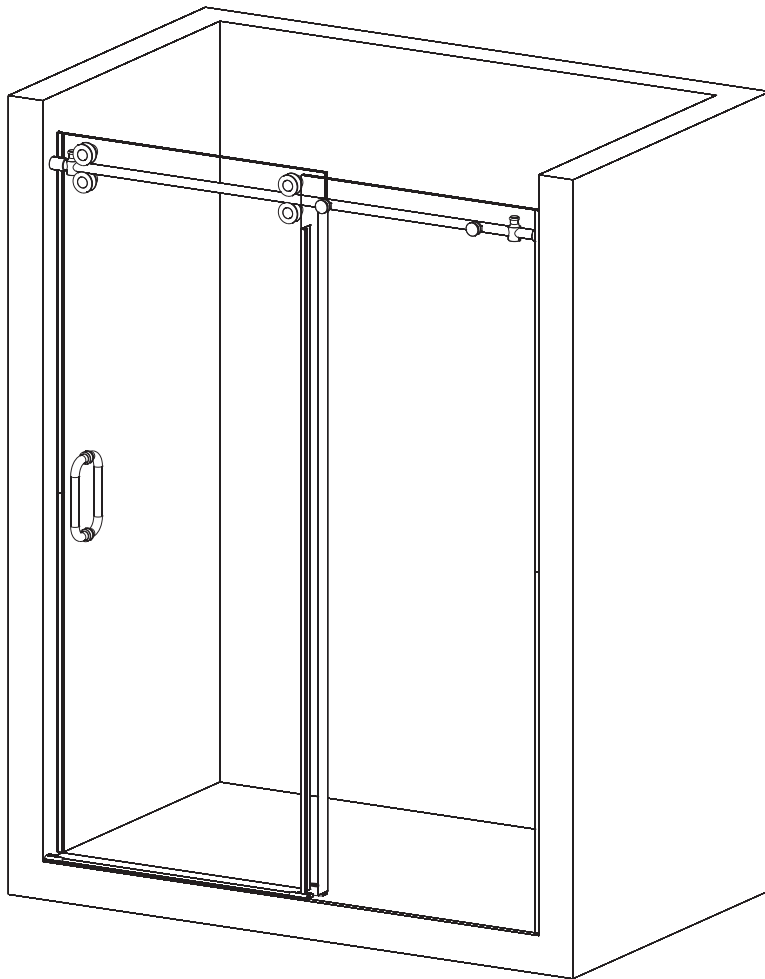


### Bartlett Shower Door



#### SAFETY INFORMATION

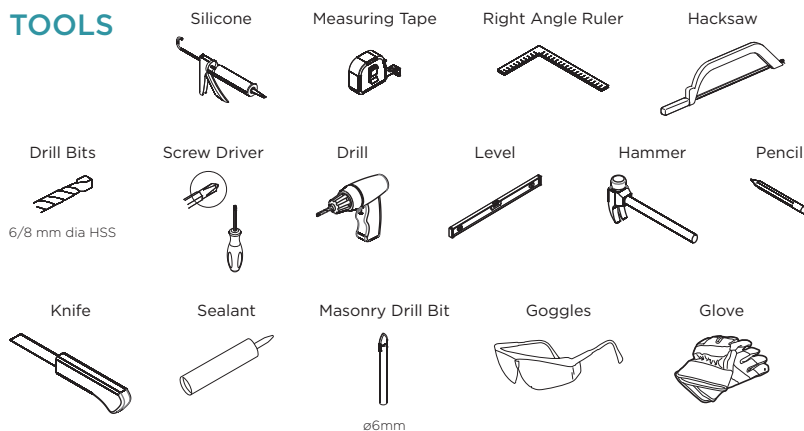
##### CAUTION

Please carefully read the following important safety information before handling or installing this shower. There is a risk of serious injury while handling this product. To minimize these risks, please note:

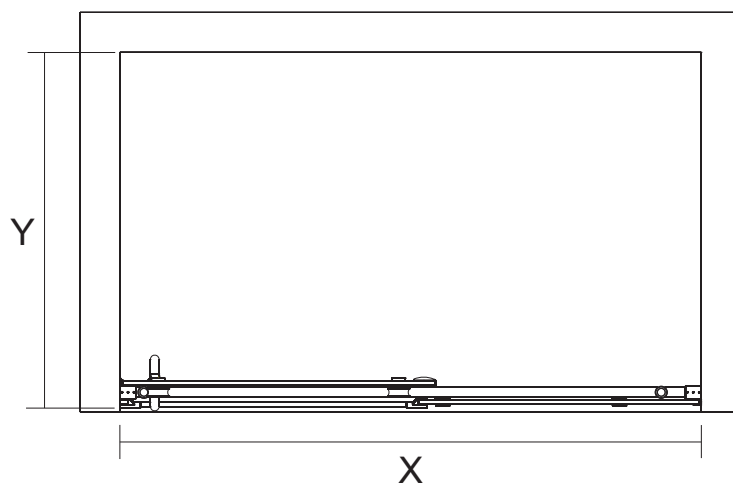
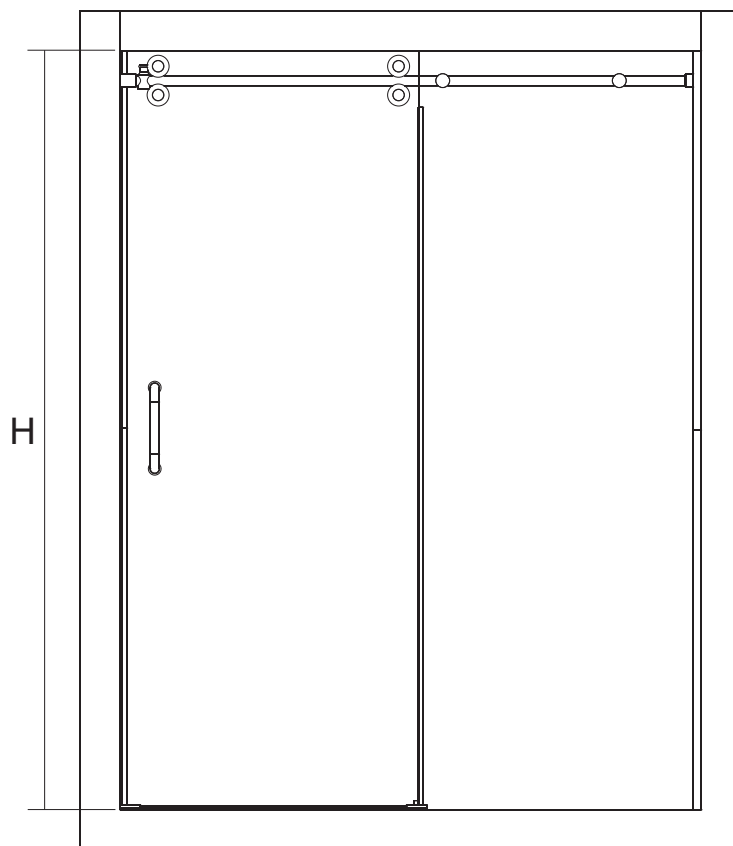
- Always wear safety glasses and gloves while handling.
- Always read and follow all the steps in the installation instructions.
- Inspect all contents and glass for damage before installation.
- Extreme caution should be taken while handling the glass during installation as the tempered glass may shatter if in contact with a hard surface.
- Handle the tempered glass with caution! Improperly handling the glass can cause it to break suddenly in small pieces (never in pointed fragments).
- Always take all precautions not to touch the tempered glass with any tools during the installation, or after installed.
- Do not cut or modify the tempered glass as it will shatter if cut.
- Carefully remove product from packaging and keep packaging until installation is complete.
- Inspect all parts for damage; if there is damage to the unit prior to installation, please contact customer service at the number provided in this guide.
- Install the shower on a floor that is level and able to accommodate the weight of the unit and an occupant.
- Consult local building codes and compliance standards prior to installation and ensure conformity.
- After installation, and from time to time, check the glass for fit and finish to ensure that nothing has come loose since installation.
- Keep this installation manual for future reference.

**NOTE: Heavy product! You will need at least two people to install this unit properly.**

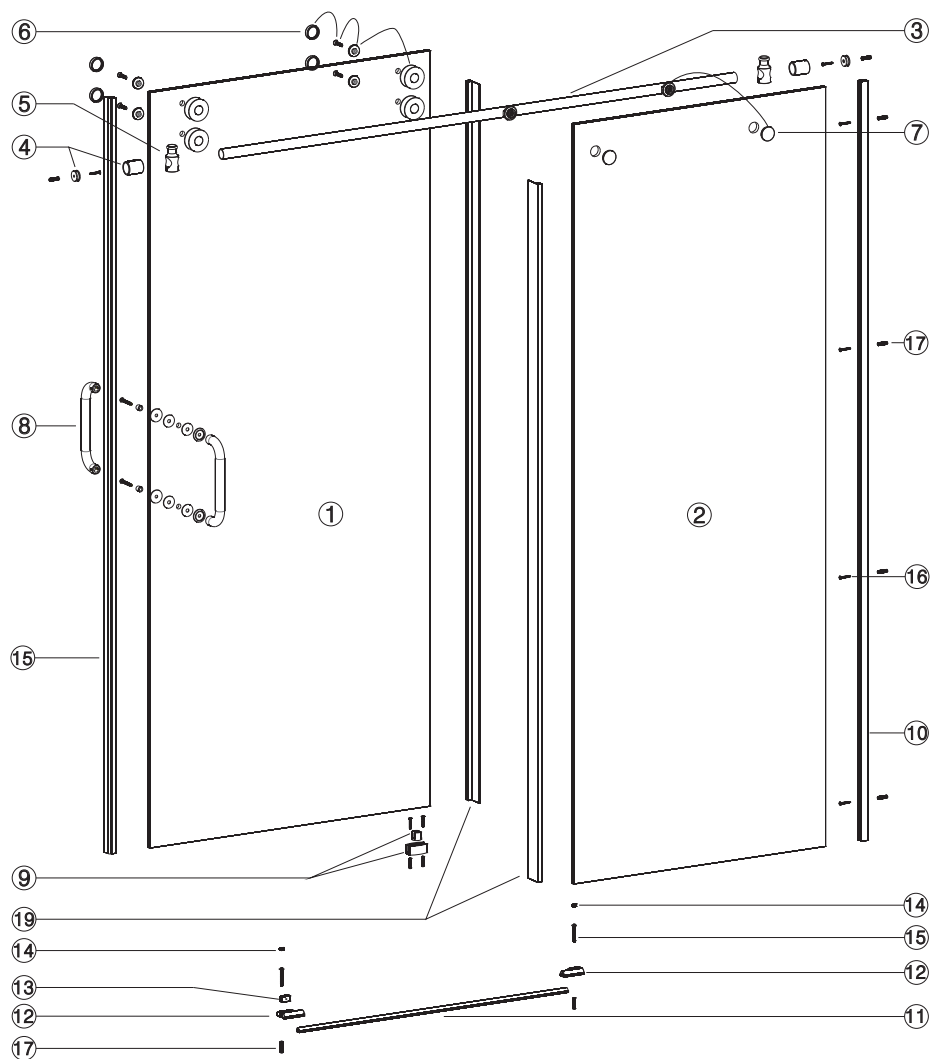
#### TOOLS



### Bartlett Shower Door



### Bartlett Shower Door

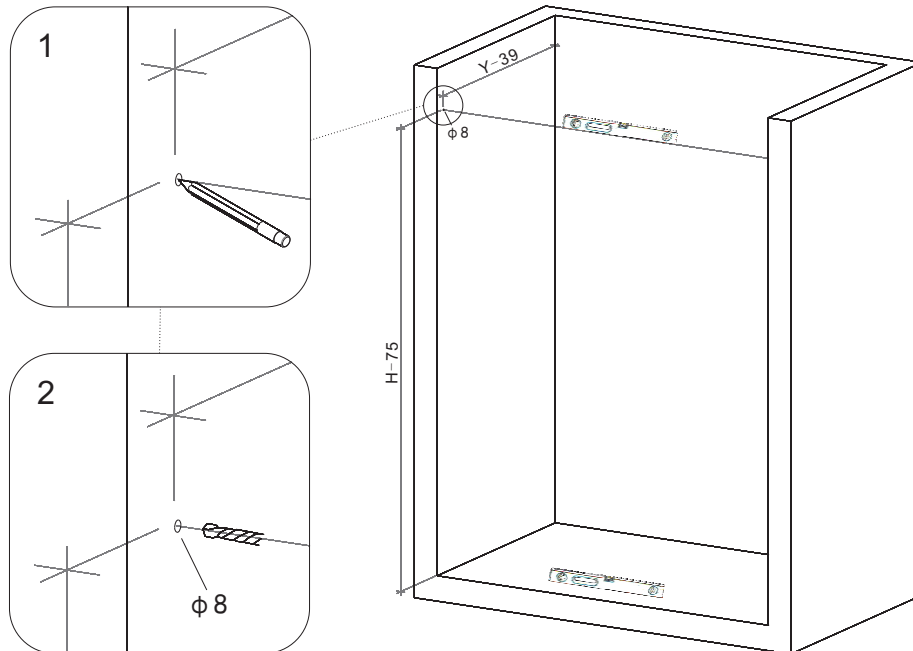


Code	Description
B1	Door panel
B2	Fixed panel
B3	ø25 top rail
B4	ø25 rail connector 2 pieces
B5	Stopper 2 pieces
B6	Roller 4 pieces
B7	Glass clamp 2 pieces
B8	Handle
B9	Guide
B10	U channel
B11	Weather bar
B12	Connectors 2 pieces
B13	Block
B14	Cap 2 pieces
B15	Round head St4 x 30 2 pieces
B16	Sunk head St4 x 30 4 pieces
B17	ø6mm anchor 6 pieces
B18	Door seal
B19	F seal 2 pieces

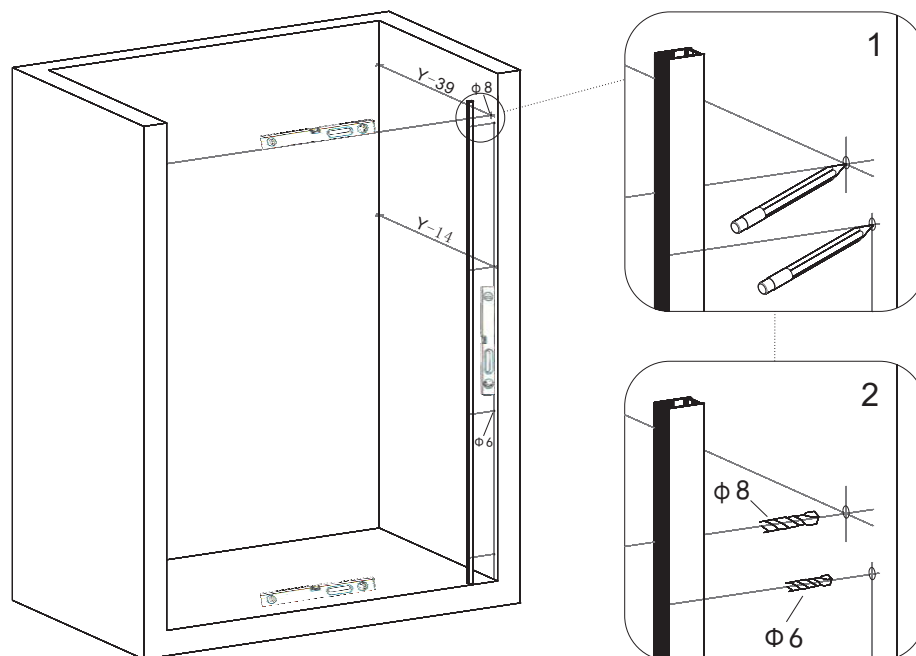
### Bartlett Shower Door

NOTICE: WE RECOMMEND LOCTITE BLUE 242 THREADLOCKER SHOULD BE USED ON ALL THREADED PARTS.

1



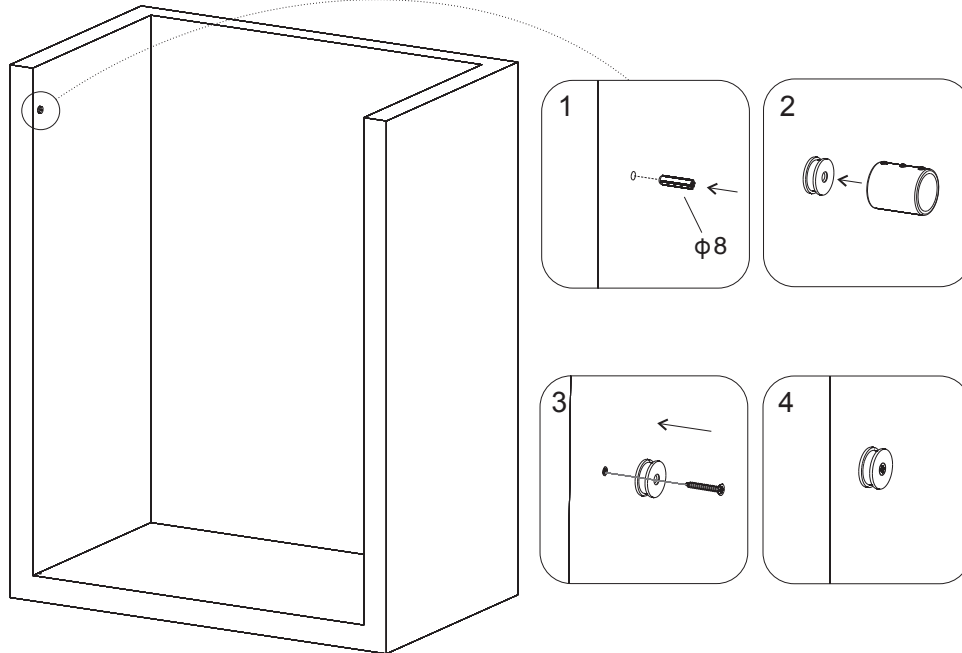
2



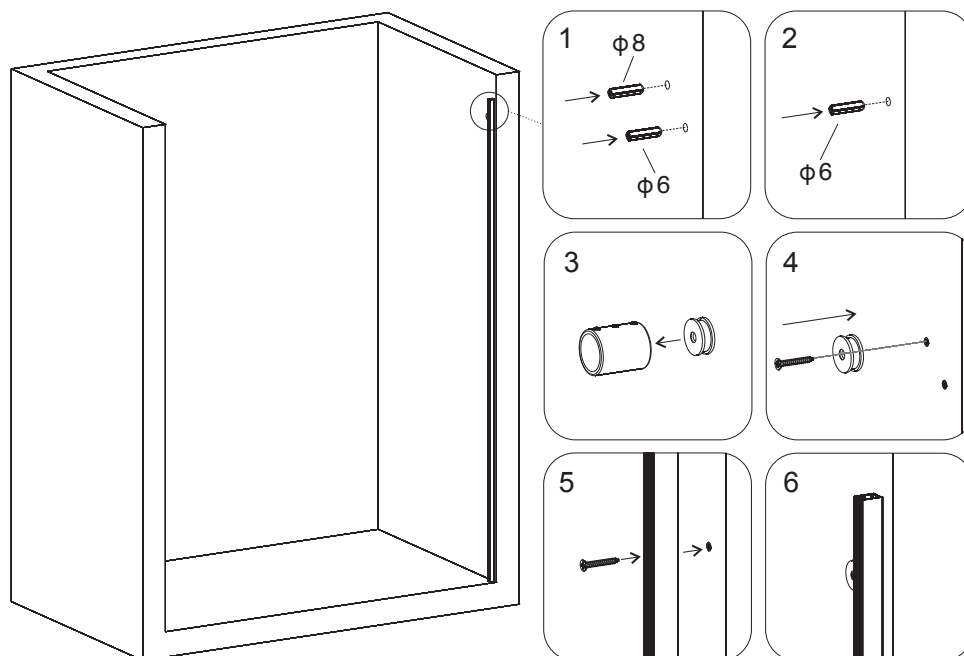
### Bartlett Shower Door

NOTICE: WE RECOMMEND LOCTITE BLUE 242 THREADLOCKER SHOULD BE USED ON ALL THREADED PARTS.

3



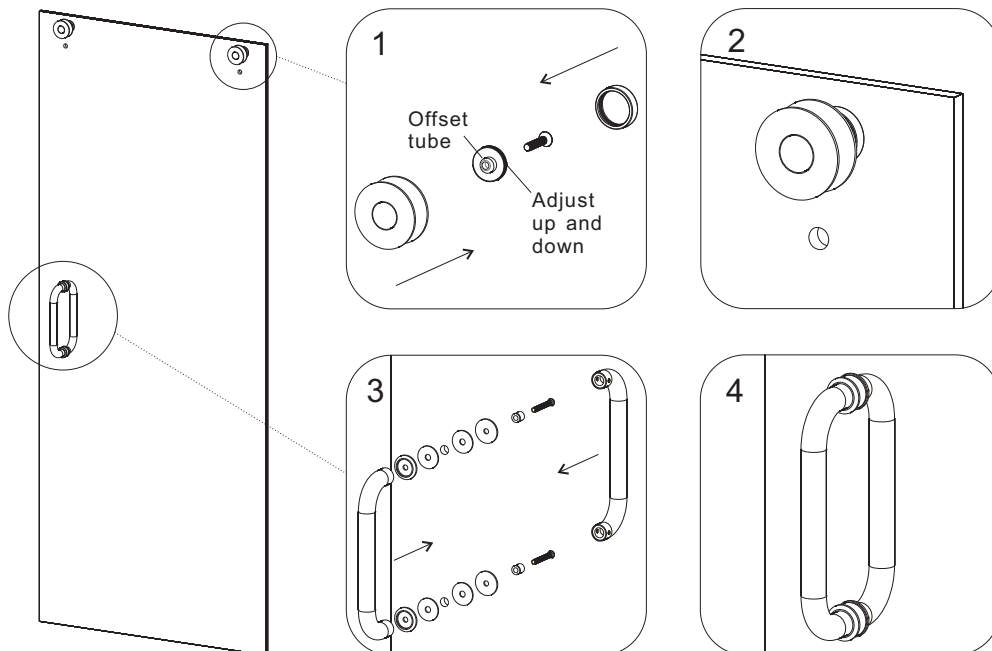
4



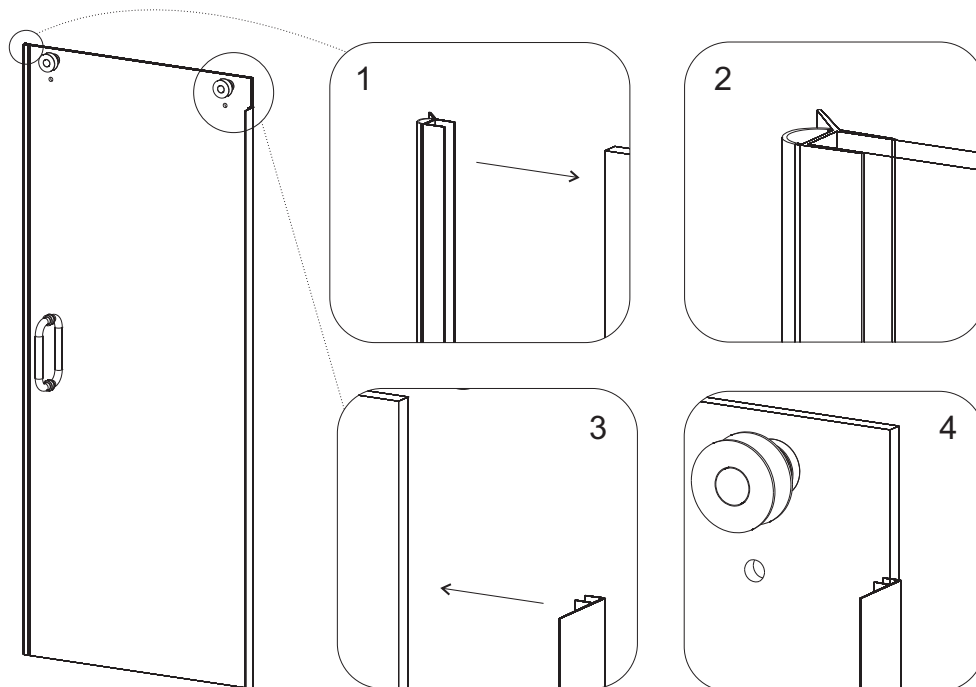
### Bartlett Shower Door

NOTICE: WE RECOMMEND LOCTITE BLUE 242 THREADLOCKER SHOULD BE USED ON ALL THREADED PARTS.

5



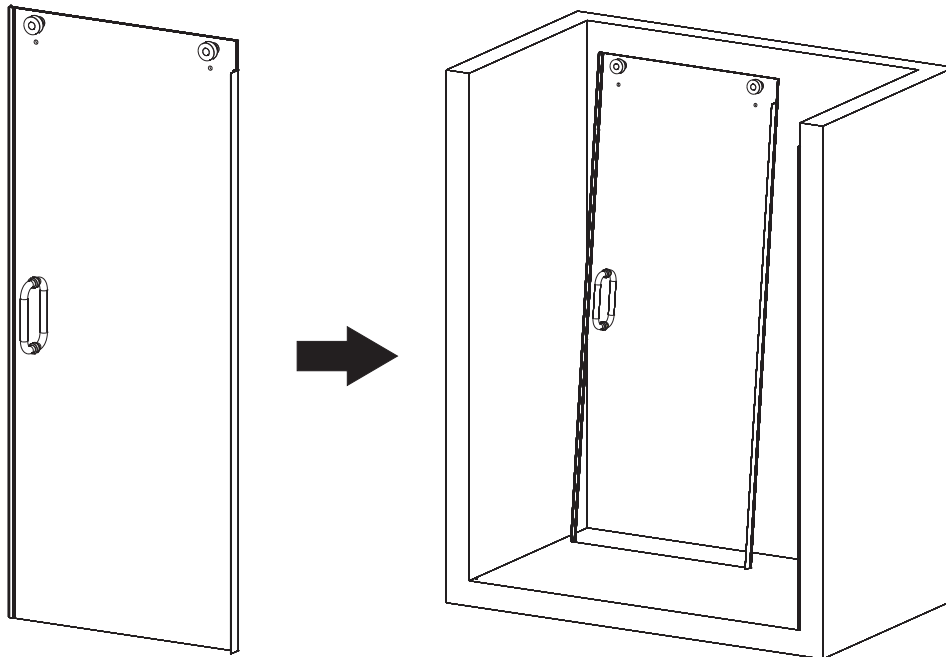
6



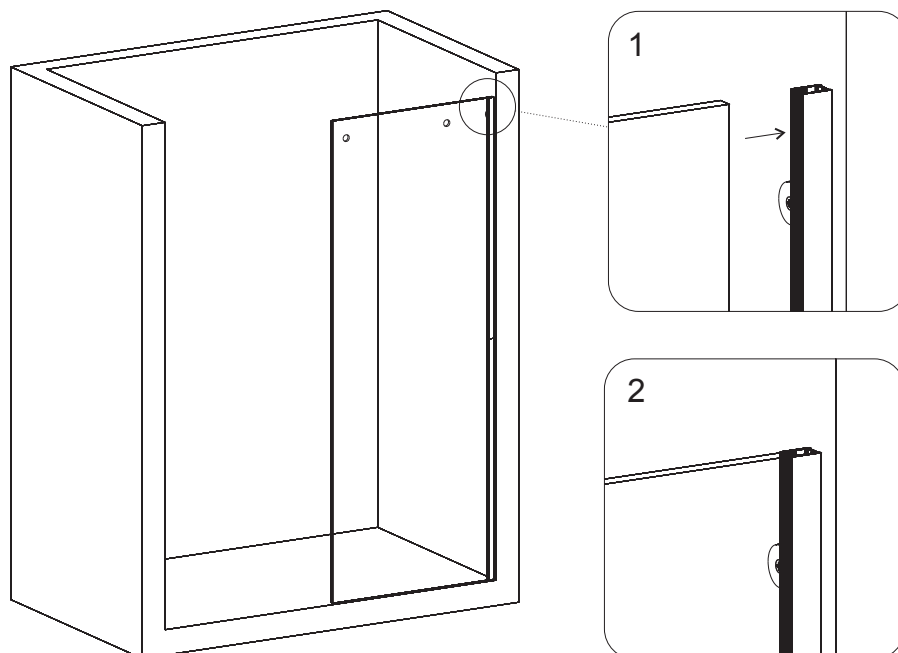
### Bartlett Shower Door

NOTICE: WE RECOMMEND LOCTITE BLUE 242 THREADLOCKER SHOULD BE USED ON ALL THREADED PARTS.

7



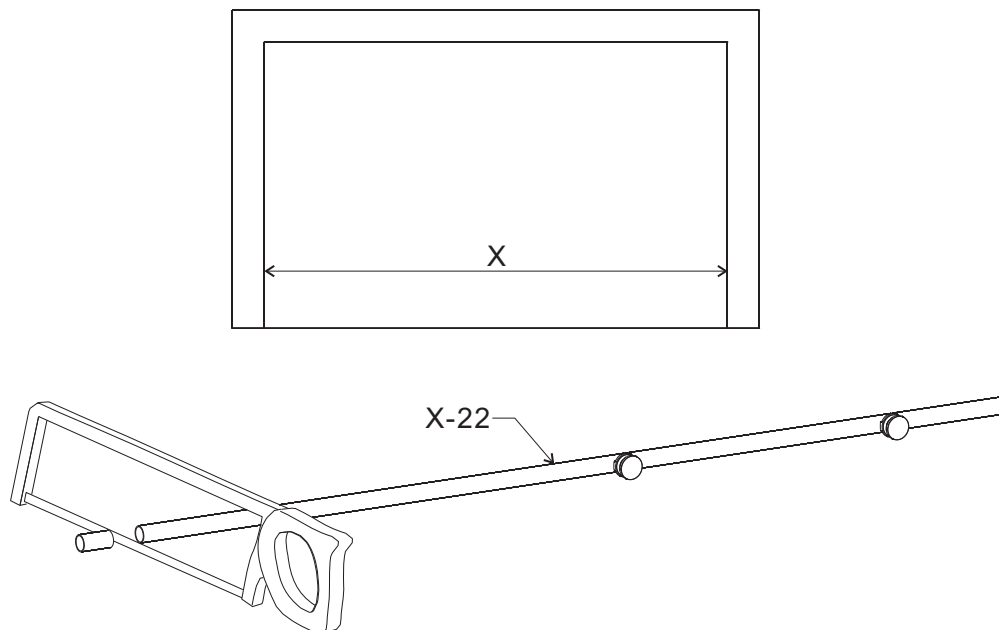
8



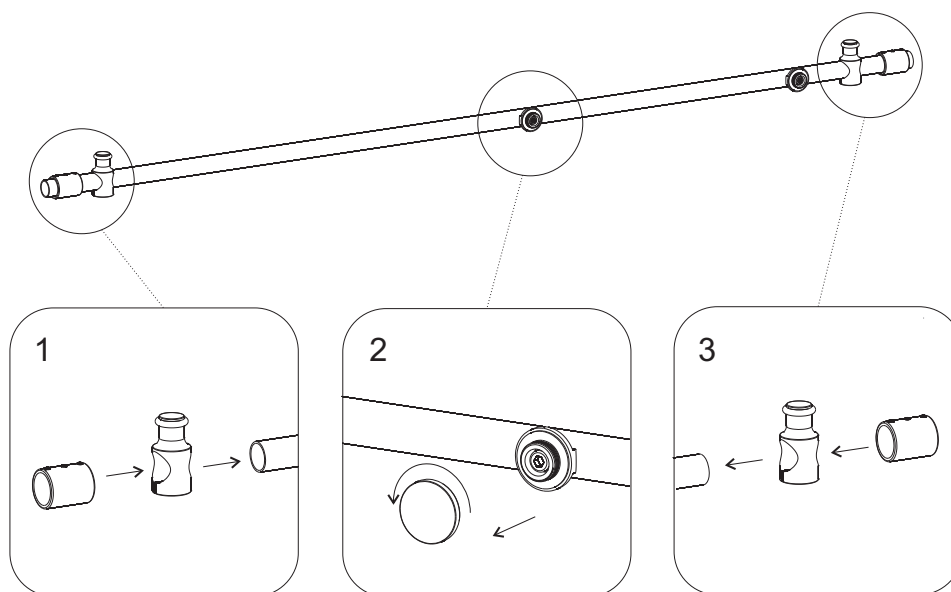
### Bartlett Shower Door

NOTICE: WE RECOMMEND LOCTITE BLUE 242 THREADLOCKER SHOULD BE USED ON ALL THREADED PARTS.

9



10

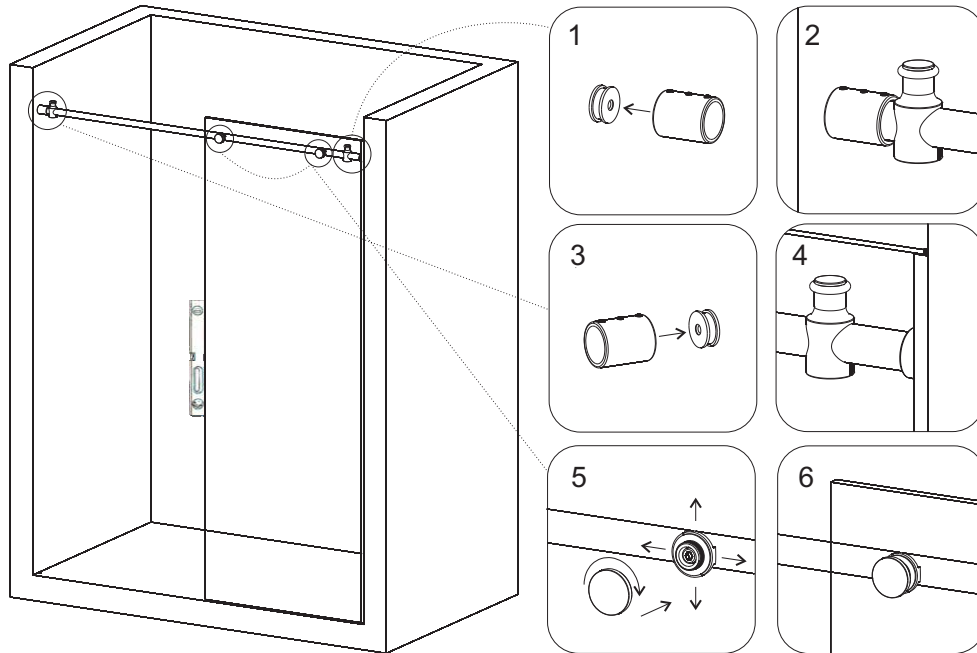




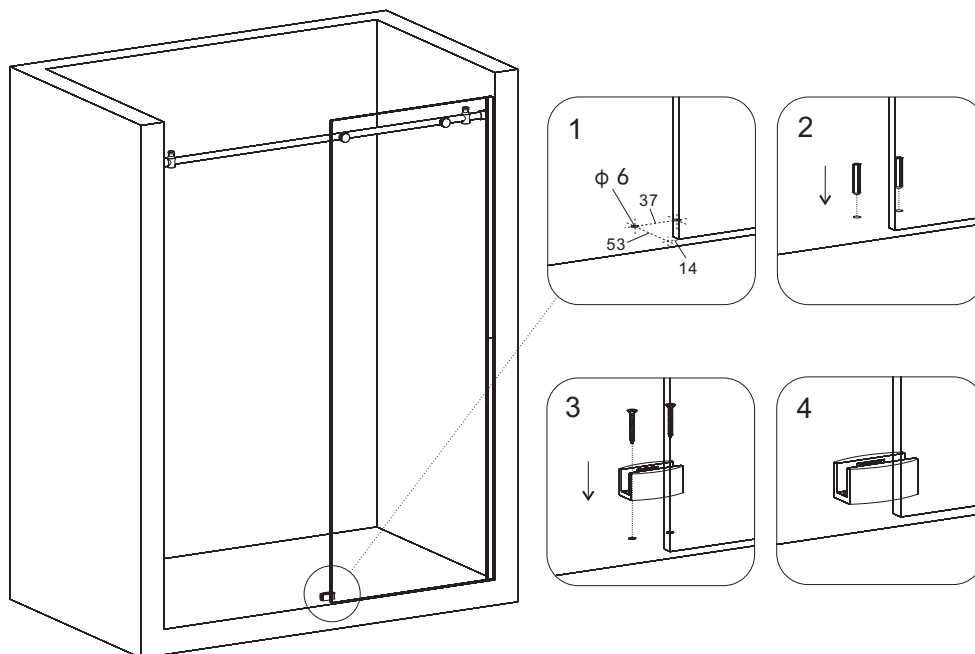
### Bartlett Shower Door

NOTICE: WE RECOMMEND LOCTITE BLUE 242 THREADLOCKER SHOULD BE USED ON ALL THREADED PARTS.

11



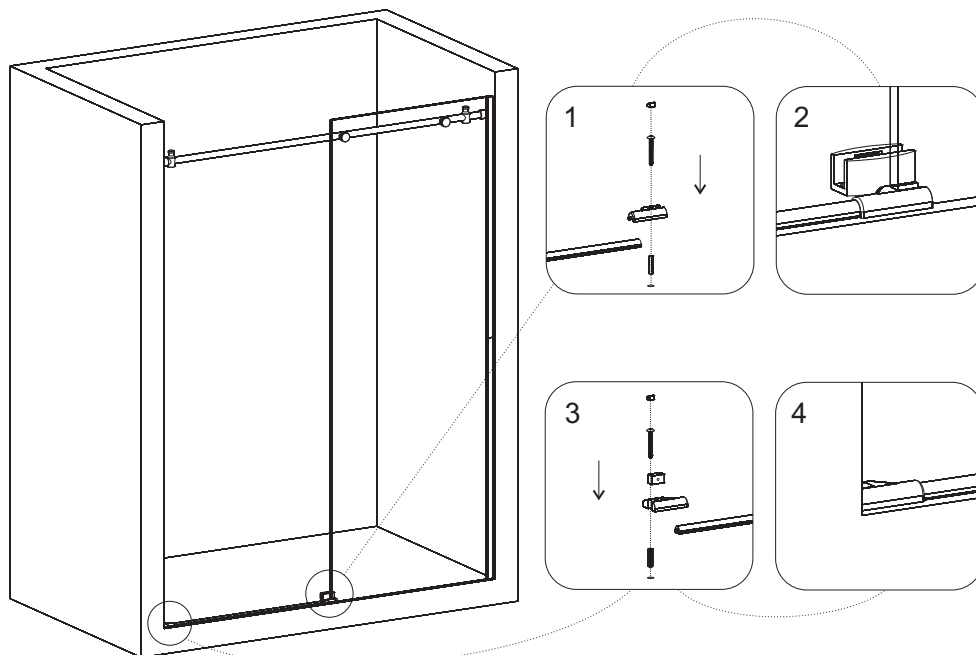
12



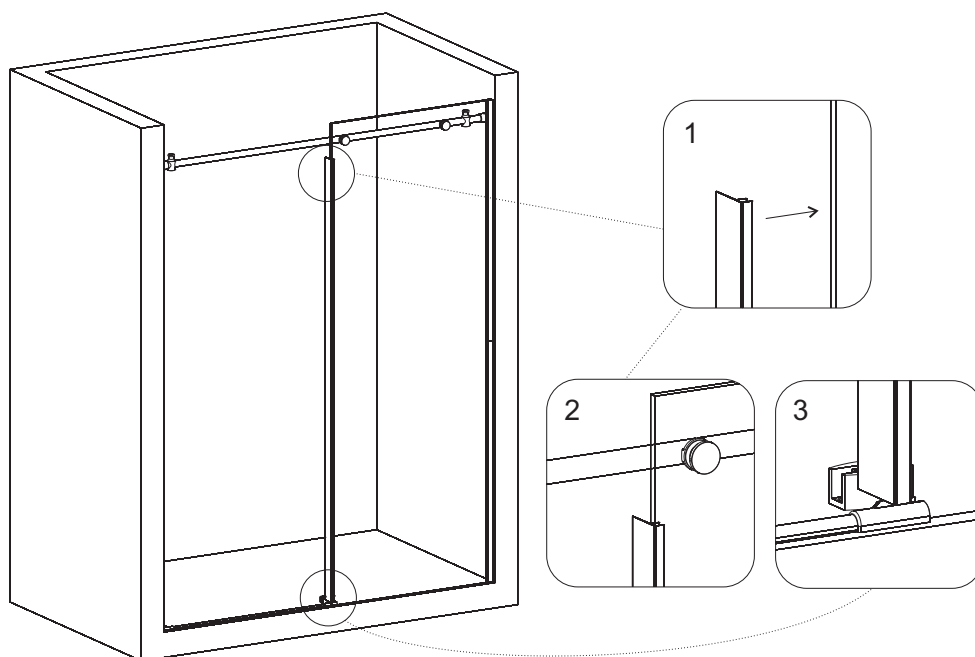
### Bartlett Shower Door

NOTICE: WE RECOMMEND LOCTITE BLUE 242 THREADLOCKER SHOULD BE USED ON ALL THREADED PARTS.

13



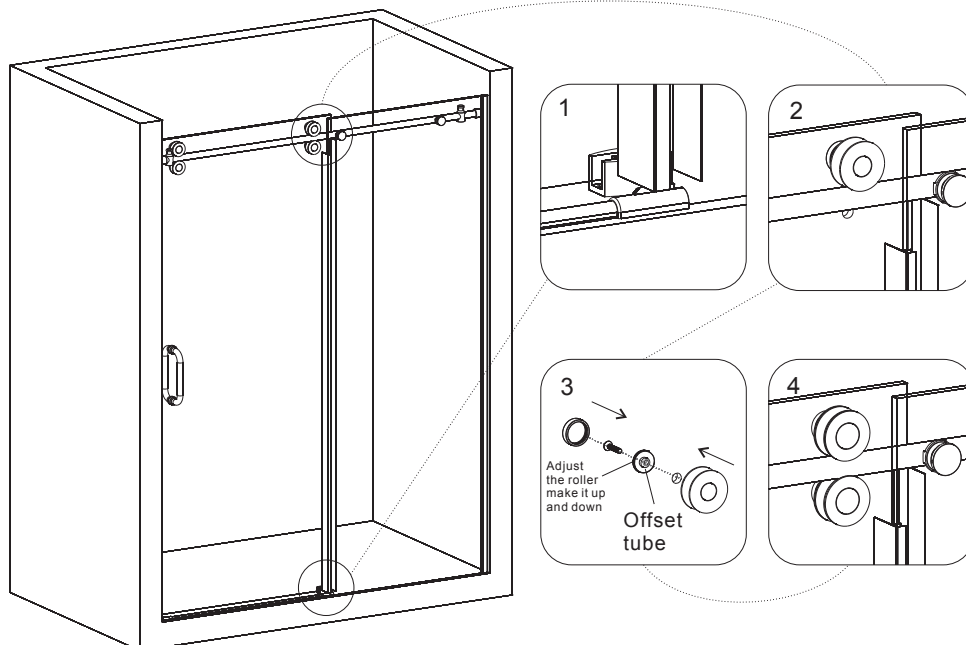
14



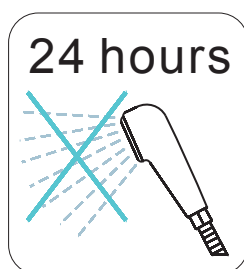
### Bartlett Shower Door

NOTICE: WE RECOMMEND LOCTITE BLUE 242 THREADLOCKER SHOULD BE USED ON ALL THREADED PARTS.

15



16



Apply silicone between the bottom of the fixed panel and the base. Silicone application along the wall channel is also suggested. In both cases, it is done from the outside of the shower area.

